

Notodontidae: Heterocampinae



Heterocampa biundata



Heterocampa guttivitta



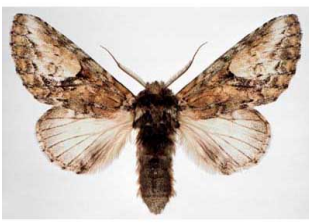
Heterocampa obliqua



Heterocampa obliqua



Heterocampa subrotata



Heterocampa umbrata



Hyparpax aurora



Lochmaeus bilineata



Lochmaeus manteo



Macrrocampa marthesia



Misogada unicolor



Oligocentria lignicolor



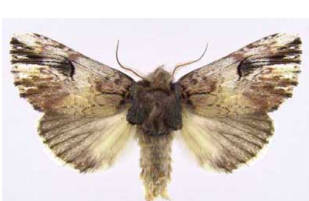
Oligocentria pallida



Oligocentria semirufescens



Schizura apicalis



Schizura badia



Schizura concinna



Schizura ipomoeae



Schizura leptinoides



Schizura unicornis

Notodontinae: Dicranurini



Cerura scitiscrupta



Cerura scitiscrupta



Cerura scitiscrupta



Furcula borealis



Furcula cinerea



Furcula modesta



Furcula occidentalis



Furcula scolopendrina



Gluphisia avimacula



Gluphisia lintreri



Gluphisia septentrionis



Gluphisia severa

Notodontinae: Notodontini



Hyperaeschra georgica



Nerice bidentata



Notodonta pacifica



Notodonta scitipennis



Notodonta simplaria



Odontosia elegans



Peridea angulosa



Peridea basitriens



Peridea ferruginea



Pheosia portlandia



Pheosia rimosa

Notodontidae: Nystaleinae:



Dasylophia anguina



Dasylophia thyatiroides



Dasylophia thyatiroides



Symmerista albifrons



Symmerista canicosta



Symmerista leucitys

Notodontidae: Phalerinae:



Datana angusii



Datana contracta



Datana drexelii



Datana integerrima



Datana ministra



Datana perspicua



Ellida caniplaga



Nadata gibbosa

Notodontidae: Pygaerinae:



Clostera albosigma



Clostera apicalis



Clostera brucei



Clostera inclusa



Clostera strigosa